



contacta 



Window Intercom Systems

Enhance your customer service by aiding and improving your communication with customers



Contents

Complete Kits	Page
STS-K070 Dual Speaker Pod System	4
STS-K071 Speaker and Microphone Pod System	5
STS-K072 Screen Mounted Microphone System	6
STS-K001 Bridge Bar System	7
STS-K002 Surface Mounted System	8
STS-K003 Flush Mounted System	9
STS-K009-IP-L-B Surface Mounted Call System.....	10
STS-K020 Retrofit Glass Mounted System	11
STS-K035 Curved Microphone System	12
STS-K058 Bent Microphone System	13
STS-K060 Stainless Bridge Bar System	14
STS-K062 Overhead Speakers & Anti-Vandal Microphone System	15
STS-K064 Overhead Speaker & Anti-Vandal Microphone System	16
STS-K080-IP, IP54 Speaker and Microphone System	17
 Components	
STS-A31H Window Intercom Amplifier.....	18
 Combined Microphone and Speaker Units	
STS-SU1-3W Staff Unit.....	19
STS-SU2 Staff Loudspeaker Pod.....	19
STS-B80 Bridge Bar Customer Unit.....	20
STS-B90 Slimline Bridge Bar Unit.....	20
STS-B94 Half Bridge Bar Unit.....	21
STS-K009-CB Call Box	21
 Microphones	
STS-M14-000 Window Mounted Microphone	22
STS-M14-BENT Window Mounted Microphone with Bent Stem	22
STS-M14-300 Window Mounted Microphone with Stem	23
STS-M14-300-EX Microphone Stem Extender	23
MIC-M15 Boundary Microphone	24
MIC-M15-300-IP Stem Microphone	24
MIC-M300 Staff Gooseneck Microphone.....	25
STS-M54 Surface Mounted Microphone.....	25
STS-M56 Flush Mounted Microphone.....	26
STS-C100/STS-C200 Window Mounted Microphone with Poly Plates	26

Components

Page

Speakers

STS-S22 Overhead Speaker Module.....	27
STS-S23 Overhead Speaker Module.....	27
STS-S23-BRKT	28
STS-S23-BRKT-C	28
STS-S60 Surface Mounted Speaker	29
STS-S61 Flush Mounted Speaker	29
STS-S70 Speaker Pod.....	30
STS-S80-IP, IP54 Rate Overhead Speaker	30

Hearing Loop Aerials

IL-AE97 Hearing Loop Sign with Built-In Aerial.....	31
IL-AE98 Window Mounted Loop Aerial.....	31
IL-AE99 Under the Counter Hearing Loop Aerial.....	32

Accessories

STS-EX Extension Cables	32
STS-SJB Break Out Box.....	33
1 Ear Headset and Microphone.....	34
2 Ear Headset and Microphone.....	34
PS-55 Power Supply.....	35



STS-K070 Dual Speaker Pod Kit

The STS-K070 Window Intercom System is an entry level kit that provides high quality sound across partitions and safety screens, featuring a speaker pod and mouse microphone for both the staff and customer sides. It's an affordable system suitable for environments with low ambient noise.

Kit Includes

- STS-A31H Window Intercom Amplifier
- STS-M70 Mouse Microphone x2
- STS-S70 Speaker Pod x2
- PS-55 Power Supply

Optional Accessories

- IL-AE99 Under the Counter Hearing Loop Aerial

Applications

For use where one to one communication is impaired by glass, such as:

- Nursing or Retirement Homes
- Hospitals
- Reception Counters
- Banks
- Retail Stores

Physical Data

Dimensions (boxed)	Height – 3.25" Width – 12.75" Depth – 8.63"
Weight	2.6lbs
Construction	ABS Plastic
Finish	Black RAL 9005

Ambient Noise Suitability

Low



STS-K071

Speaker and Microphone Unit Pod Kit

The STS-K071 Window Intercom System is an entry level kit that provides high quality sound across partitions and safety screens, featuring a customer speaker pod and mouse microphone. For the staff side, an all-in-one speaker and microphone staff unit is included making the system suitable for environments with moderate ambient noise.

Includes

- STS-A31H Window Intercom Amplifier
- STS-M70 Mouse Microphone
- STS-S70 Speaker Pod
- STS-SU2 Staff Unit
- PS-55 Power Supply

Optional Accessories

- IL-AE99 Under the Counter Hearing Loop Aerial

Applications

For use where one to one communication is impaired by glass, such as:

- Nursing or Retirement Homes
- Hospitals
- Reception Counters
- Banks
- Retail Stores

Physical Data

Dimensions (boxed)	Height – 3.25" Width – 12.75" Depth – 8.63"
Weight	3.0lbs
Construction	ABS Plastic
Finish	Black RAL 9005

Ambient Noise Suitability

Moderate

Window Intercom Systems - Complete Kits



STS-K072

Screen Mounted Microphone System

The STS-K072 Window Intercom System is entry level kit that provides high quality sound across partitions and safety screens. The kit features a customer speaker pod and screen mounted microphone and a combined speaker and microphone staff unit. It is an affordable system suitable for environments with high ambient noise.

Includes

- STS-A31H Window Intercom Amplifier
- STS-M14-BENT Microphone
- STS-S70 Speaker Pod
- STS-SU2 Staff Unit
- PS-55 Power Supply

Optional Accessories

- IL-AE99 Under the Counter Hearing Loop Aerial

Applications

For use where one to one communication is impaired by glass, such as:

- Nursing or Retirement Homes
- Hospitals
- Reception Counters
- Banks
- Retail Stores

Physical Data

Dimensions (boxed)	Height – 2.88" Width – 16.25" Depth – 8.50"
Weight	3.4lbs
Construction	ABS Plastic
Finish	Black RAL 9005

Ambient Noise Suitability

High



STS-K001

Bridge Bar Kit

The STS-K001 Window Intercom System features the STS-B80 Bridge Bar Customer Unit with a central microphone and speakers on either side. For the staff, the STS-SU1-3W combined microphone and speaker unit has an adjustable neck and features a three way mute switch. The kit comes with an IL-AE99 under the counter hearing loop aerial.

Includes

- STS-A31H Window Intercom Amplifier
- STS-B80 Bridge Bar Customer Unit
- STS-SU1-3W Staff Unit
- PS-55 Power Supply
- IL-AE99 Under the Counter Hearing Loop Aerial

Applications

For use where one to one communication is impaired by glass, such as:

- Banks
- Post Offices
- Theaters
- Information Centers
- Public Transit Systems
- Ticket Counters
- Embassies
- Government Buildings

Physical Data

Dimensions (boxed)	Height – 4.88"
	Width – 26.13" Depth – 10.25"
Weight (boxed)	8.2lbs
Construction	Mild Steel
	ABS Plastic
Finish	Grey Leatherette
	Black Textured

Product Codes

Bridge Bar Kit in Grey	STS-K001-G
Bridge Bar Kit in Black	STS-K001-B

Ambient Noise Suitability

High



STS-K002

Surface Mounted Kit

The STS-K002 Window Intercom System features customer side surface mount speaker and microphone units. For the staff, the STS-SU1-3W combined microphone and speaker unit has an adjustable neck and features a three way mute switch. The kit comes with an IL-AE99 under the counter hearing loop aerial.

Includes

- STS-A31H Window Intercom Amplifier
- STS-S60 Surface Mounted Speaker
- STS-M54 Surface Mounted Microphone
- STS-SU1-3W Staff Unit
- PS-55 Power Supply
- IL-AE99 Under the Counter Hearing Loop Aerial

Physical Data

Dimensions (boxed)	Height – 5.00"
	Width – 14.63" Depth – 10.88"
Weight (boxed)	7.0lbs
Construction	Mild Steel
	ABS Plastic
Finish	Grey Leatherette
	Black Textured

Applications

For use where one to one communication is impaired by glass, such as:

- Banks
- Post Offices
- Theaters
- Information Centers
- Ticket Counters
- Embassies
- Government Buildings

Product Codes

Surface Mounted Kit in Grey	STS-K002-G
Surface Mounted Kit in Black	STS-K002-B

Ambient Noise Suitability

Moderate



STS-K003 Flush Mounted Kit

The STS-K003 Window Intercom System features customer flush mount speaker and microphone units that can be installed into the counter or nearby vertical surface. They prevent tampering in high-risk environments such as banks and prisons. For the staff, the STS-SU1-3W combined microphone and speaker unit has an adjustable neck and features a three way mute switch. The kit comes with an IL-AE99 under the counter hearing loop aerial.

Includes

- STS-A31H Window Intercom Amplifier
- STS-S61 Flush Mounted Speaker
- STS-M56 Flush Mounted Microphone
- STS-SU1-3W Staff Unit
- PS-55 Power Supply
- IL-AE99 Under the Counter Hearing Loop Aerial

Applications

For use where one to one communication is impaired by glass, such as:

- Banks
- Post Offices
- Correctional Facilities
- Ticket Counters
- Embassies
- Government Buildings

Physical Data

Dimensions (boxed)	Height – 5.00” Width – 14.63” Depth – 10.88”
Weight (boxed)	6.0lbs
Construction	Mild Steel
	ABS Plastic
Finish	Grey Leatherette
	Black Textured

Product Codes

Flush Mounted Kit in Grey	STS-K003-G
Flush Mounted Kit in Black	STS-K003-B

Ambient Noise Suitability

Moderate



STS-K009-IP-L-B

IP55 Surface Mounted Call System

The STS-K009-IP-L-B Window Intercom System features a customer IP55 weather rated outdoor Call Unit. It is ideal for locations such as parking lots, gated entrances and doorways, delivery points and other open-air applications. The IP55 rating ensures protection against water, dust, and dirt ingress. For the staff, the STS-SU1-3W combined microphone and speaker unit has an adjustable neck and features a three way mute switch. The kit comes with an IL-AE99 under the counter hearing loop aerial.

Includes

- STS-A31H Window Intercom Amplifier
- K009-IP Surface Mounted Call Unit
- STS-SU1-3W Staff Unit
- IL-AE99 Under the Counter Hearing Loop Aerial
- PS-55 Power Supply

Applications

For use outdoors in venues such as:

- Outdoor access points
- Transport and distribution stations
- Ports and ferry terminals
- Parking Garages
- Medical facilities
- Drive through services (food, banking, retail)

Physical Data

Dimensions (boxed)	Height – 4.00" Width – 12.88" Depth – 9.63"
Weight	7.4lbs
Construction	Mixed
Finish	Black Powder Coated Leatherette

Ambient Noise Suitability

Moderate



STS-K020-S23

Retrofit Glass Mounted Kit

The STS-K020 Window Intercom System is specifically designed to retrofit into a glass window where an existing system has left a hole in the glass. The glass mounted customer microphone is attached with two polycarbonate plates that are ballistic level IIIA rated. The kit comes with the STS-S23 overhead customer speaker, STS-SU1-3W combined microphone and speaker unit for the staff and a glass mounted hearing loop aerial and sign.

Includes

- STS-A31H Window Intercom Amplifier
- STS-S23 Surface Mounted Overhead Speaker
- STS-C100 Glass Mounted Microphone Kit
- STS-SU1-3W Staff Unit
- PS-55 Power Supply
- IL-AE98 Window Mounted Hearing Loop Aerial

Applications

For use where one to one communication is impaired by glass, such as:

- Banks
- Public Transit Systems
- Police Departments
- Ticket Counters
- Embassies
- Government Buildings

Ambient Noise Suitability

High

Physical Data

Dimensions (boxed)	Height – 6.25" Width – 15.13" Depth – 10.25"
Weight (boxed)	7.8lbs
Construction	Mild Steel
	ABS Plastic
Finish	Grey Leatherette
	Grey Semi Gloss
	Black Textured

Product Codes

Retrofit Kit to accommodate 4" hole	STS-K020-S23
Retrofit Kit to accommodate 5" hole	STS-K020-S23-6



STS-K035 Curved Microphone Kit

The STS-K035 Window Intercom System features a Half Bridge Bar customer speaker and microphone unit that can be positioned to the left or right of a pass through tray. For the staff, the STS-SU1-3W combined microphone and speaker unit has an adjustable neck and features a three way mute switch. The kit comes with an IL-AE99 under the counter hearing loop aerial.

Includes

- STS-A31H Window Intercom Amplifier
- STS-B94 (LH/RH) Half Bridge Bar Unit
- STS-SU1-3W Staff Unit
- PS-55 Power Supply
- IL-AE99 Under the Counter Hearing Loop Aerial

Applications

For use where one to one communication is impaired by glass, such as:

- Banks
- Post Offices
- Theaters
- Information Centers
- Ticket Counters
- Embassies
- Government Buildings

Physical Data

Dimensions (boxed)	Height – 6.25" Width – 12.13" Depth – 12.38"
Weight (boxed)	6.2lbs
Construction	Mild Steel
	ABS Plastic
Finish	Grey Leatherette
	Black Textured

Product Codes

Curved Left Microphone Kit in Black	STS-K035-LH-B
Curved Left Microphone Kit in Grey	STS-K035-LH-G
Curved Right Microphone Kit in Black	STS-K035-RH-B
Curved Right Microphone Kit in Grey	STS-K035-RH-G



STS-K058 Bent Microphone Kit

The STS-K058 Window Intercom System kit includes the customer STS-S60 Surface Mounted Speaker unit and the STS-M14-BENT Window Mounted Microphone with attached curved tubing. For the staff, the STS-SU1-3W combined microphone and speaker unit has an adjustable neck and features a three way mute switch. The kit comes with an IL-AE99 under the counter hearing loop aerial.

Includes

- STS-A31H Window Intercom Amplifier
- STS-S60 Surface Mounted Speaker
- STS-M14 BENT-G Customer Window Mounted Microphone with Curved Tubing
- STS-SU1-3W Staff Unit
- PS-55 Power Supply
- IL-AE99 Under the Counter Hearing Loop Aerial

Physical Data

Dimensions (boxed)	Height – 6.25" Width – 12.13" Depth – 12.38"
Weight (boxed)	6.2lbs
Construction	Mild Steel
	ABS Plastic
Finish	Grey Leatherette
	Black Textured

Applications

For use where one to one communication is impaired by glass, such as:

- Banks
- Post Offices
- Theaters
- Information Centers
- Public Transit Systems
- Ticket Counters
- Embassies
- Government Buildings

Ambient Noise Suitability

High



STS-K060

Stainless Bridge Bar Kit

The STS-K060 Window Intercom System features the customer STS-S90-SS Stainless Bridge Bar Unit with a glass-mounted microphone and speaker pods. The STS-SU1-SS combined microphone and speaker unit for the staff is provided in a stainless steel finish to give the kit a sleek modern look. The kit comes with an IL-AE99 under the counter hearing loop aerial.

Includes

- STS-A31H Window Intercom Amplifier
- STS-B90-SS Slimline Bridge Bar Unit
- STS-SU1-SS Staff Unit
- PS-55 Power Supply
- IL-AE99 Under the Counter Hearing Loop Aerial

Physical Data

Dimensions (boxed)	Height – 4.50" Width – 16.88" Depth – 12.50"
Weight (boxed)	6.8lbs
Construction	Mild Steel ABS Plastic
Finish	Stainless Steel

Applications

For use where one to one communication is impaired by glass, such as:

- Banks
- Post Offices
- Theaters
- Information Centers
- Public Transit Systems
- Ticket Counters
- Embassies
- Government Buildings

Ambient Noise Suitability

High



STS-K062

Overhead Speaker and Window Mounted Microphone System

The STS-K062 Window Intercom System features overhead speakers for both the staff and the customer. An window mounted microphone is provided for the customer side and for the staff, the MIC-M300 gooseneck microphone. The kit comes with an IL-AE97 hearing loop aerial kit that can be mounted to the glass or any vertical surface.

Includes

- STS-A31H Window Intercom Amplifier
- STS-M14-300 Window Mounted Microphone
- MIC-M300 Flexible Gooseneck Microphone
- STS-S23 Overhead Speaker x2
- IL-AE97 Hearing Loop Sign with Built-In Aerial
- PS-55 Power Supply

Applications

For use where one to one communication is impaired by glass, such as:

- Banks
- Post Offices
- Information Centers
- Airports
- Supermarkets/Checkouts
- Pharmacies

Physical Data

Dimensions (boxed)	Height – 4.13” Width – 16.13” Depth – 11.50”
Weight (boxed)	8.40lbs
Construction	Stainless Steel
	Mild Steel
	ABS Plastic
Finish	Grey Leatherette
	RAL 9006 Powder Coated Semi Gloss
	Black Textured

Ambient Noise Suitability

High



STS-K064

Overhead Speaker and Window Mounted Microphone System

The STS-K064 Window Intercom System features an overhead speaker and window mounted microphone for the customer side, along with the STS-SU1-3W combined microphone and speaker unit that has an adjustable neck and features a three way mute switch. The kit comes with an IL-AE99 under the counter hearing loop aerial.

Includes

- STS-A31H Window Intercom Amplifier
- STS-M14-300 Window Mounted Microphone
- STS_SU1-3W Staff Unit
- STS-S23 Overhead Speaker
- IL-AE99 Under the Counter Hearing Loop Aerial
- PS-55 Power Supply

Applications

For use where one to one communication is impaired by glass, such as:

- Banks
- Post Offices
- Information Centers
- Airports
- Supermarkets/Checkouts
- Pharmacies

Physical Data

Dimensions (boxed)	Height – 6.25"
	Width – 12.13" Depth – 12.38"
Weight	6.0lbs
Construction	Stainless Steel
	Mild Steel
	ABS Plastic
Finish	Grey Leatherette
	RAL 9006 Powder Coated Semi Gloss
	Black Textured

Ambient Noise Suitability

High



STS-K080-IP

IP54 Speaker and Microphone System

The STS-K080-IP Window Intercom System features an IP54 STS-S80-IP overhead speaker and an IP54 rated stem microphone for the customer side. The IP55 rating ensures protection against water, dust, and dirt ingress making it suitable for outdoor applications. For the staff, the STS-SU1-3W combined microphone and speaker unit has an adjustable neck and features a three way mute switch. The kit comes with an IL-AE99 under the counter hearing loop aerial.

Includes

- STS-A31H Window Intercom Amplifier
- STS-M15-300-IP Stem Microphone
- STS_SU1-3W-B Staff Unit
- STS-S80-IP Overhead Speaker
- IL-AE99 Under the Counter Hearing Loop Aerial
- PS-55 Power Supply

Physical Data

Dimensions (boxed)	Height – 6.25"
	Width – 12.13" Depth – 12.38"
Weight	7.4lbs
Construction	Stainless Steel
	Mild Steel
	ABS Plastic
Finish	Matt Black
	Black Powder Coated
	Black Textured

Applications

For use outdoors in venues such as:

- Outdoor access points
- Transport and distribution stations
- Ports and ferry terminals
- Security Doors
- Mass Testing Facilities
- Drive through services (food, banking, retail)

Ambient Noise Suitability

High



STS-A31H

Window Intercom Amplifier

The STS-A31H is an all-in-one Hearing Loop and Duplex Amplifier specifically designed for all the Window Intercom System kits.

Features

- Energy-saving "green" standby mode is automatically used, achieving a power saving of up to 80%
- Constant current hearing loop drive (with engineer adjustable hearing loop drive level)
- Isolated audio line input / output allows additional ohmically isolated line level audio input or output to recording system
- Continuous self-testing means that no specialized equipment is required to confirm functionality
- Power and status indication: Green/Red LED column indicator aids adjustments and indicates power and status
- DC Power: 2.1mm DC jack

Physical Data

Dimensions	Height – 1.58" Width – 4.58" Depth – 4.50"
Weight	0.32lbs
Construction	ABS Plastic Construction Housing
Finish	Matt Black Fine Texture

Technical Data

Supply Voltage	12-14 VDC
Quiescent Current	100mA typical
Operating Current	2A typical on speech peaks
Power Switch	Push on - push off (tact switch under membrane)
Microphones	Electret, supply 5V via 2.2K Ω load resistor
Speaker Output Power	RMS: 2.5W / 8 Ω , 4.4W / 4 Ω
Loop Drive Compliance	Constant current, bounded by 4Vrms & 3Arms
Total Harmonic Distortion	<5% (loop and speakers)

Accessory

- PS-55 Power Supply (page 30)

STS-SU1-3W Staff Unit

The combined microphone and speaker unit that has an adjustable neck and features a three way mute switch.



Technical Data

Speaker	RMS	5W
	Impedance	4Ω
	Output	SPL 1W @ 1M 85dB
	Frequency Response	150Hz - 10300Hz
Microphone	Directional Response	Cardioid
	Frequency Response	150Hz - 10500Hz
	Sensitivity	49.5dB+ 2dB @ 1kHz (0dB=1V/pa)
	Impedance	1.6KΩ+ 3-% @ 1kHz

Product Codes

Staff Unit in Grey	STS-SU1-3W-G
Staff Unit in Black	STS-SU1-3W-B

Physical Data

Dimensions	Height – 14.50” Width – 3.80” Depth – 6.05”
Weight	1.79lbs
Construction	Mild Steel
Finish	Grey Leatherette
	Black Textured

STS-SU2 Staff Pod

The combined microphone and speaker unit that has an adjustable neck that can be either free standing or surface mounted.

Technical Data

Speaker	RMS	5W
	Impedance	4Ω
	Output	SPL 1W @ 1M 85dB
	Frequency Response	150Hz - 10300Hz
Microphone	Directional Response	Cardioid
	Frequency Response	150Hz - 10500Hz
	Sensitivity	49.5dB+ 2dB @ 1kHz
	Impedance	1.6KΩ+ 3-% @ 1kHz

Physical Data

Dimensions	Speaker Pod Diameter – 4.30” Height – 14.38”
------------	--



STS-B80

Bridge Bar Customer Unit

A combined speaker and microphone bridge bar unit, designed for the customer side. The directional microphone makes this ideal for environments with high ambient noise levels.

The unit fits well on counters with pass through trays.

Technical Data

Speaker	RMS	5W
	Impedance	4Ω
	Output	SPL 1W @ 1M 85dB
	Frequency Response	150Hz - 11000Hz
Microphone	Directional Response	Cardioid
	Frequency Response	70Hz - 14000Hz
	Sensitivity	-67dB ± 3dB @ 1KHz
	Impedance	1.6KΩ =/- 30% @ 1KHz



Physical Data

Dimensions	Height – 8.63” Width – 24.25” Depth – 2.93”
Weight	3.0lbs
Construction	Mild Steel
Finish	Grey Leatherette
	Black Textured

Product Codes

Bridge Bar Customer Unit in Grey	STS-B80-G
Bridge Bar Customer Unit in Black	STS-B80-B

STS-B90

Slimline Bridge Bar Unit

The slimline stainless steel bridge bar unit with a combined speaker and screen mounted microphone designed for the customer side. The directional microphone makes this ideal for environments with high ambient noise levels.

The STS-B90 is included in the STS-K060 Window Intercom Kit.

Technical Data

Speaker	RMS	5W
	Impedance	4Ω
	Output	SPL 1W @ 1M 85dB
	Frequency Response	150Hz - 11000Hz
Microphone	Directional Response	Cardioid
	Frequency Response	70Hz - 14000Hz
	Sensitivity	-47dB ± 3dB @ 1KHz
	Impedance	680Ω =/- 1KHz



Physical Data

Dimensions	Height – 16.9” Width – 22.8” Depth – 2.36”
Weight	1.44lbs
Construction	Mild Steel
Finish	Brushed Stainless Steel

STS-B94 Half Bridge Bar Unit

A half bridge bar speaker and directional microphone module with a curved stem for counters with reduced space.



Physical Data

Dimensions	Height – 9.44" Width – 11.02" Depth – 5.11"
Weight	1.67lbs
Construction	Mild Steel
Finish	Grey Leatherette
	Black Textured

Technical Data

Speaker	RMS	5W
	Impedance	4Ω
	Output	SPL 1W @ 1M 85dB
	Frequency Response	150Hz - 11000Hz
Microphone	Directional Response	Cardioid
	Frequency Response	70Hz - 14000Hz
	Sensitivity	-67dB ± 3dB @ 1KHz
	Impedance	1.6KΩ =/- 30% @ 1KHz

Product Codes

Curved Left Unit in Grey	STS-B94-LH-G
Curved Left Unit in Black	STS-B94-LH-B
Curved Right Unit in Grey	STS-B94-RH-G
Curved Right Unit in Black	STS-B94-RH-B

STS-K009-CB

Call Box

The surface mounted call unit features a call button on the front to inform staff of a customer's presence and open a handsfree conversation channel. It has an LED light to help users find the system when it is dark outside. The IP55 rating ensures that it is suited for outdoor environments offering protection against water, dust and dirt ingress. This call box is included in the STS-K009-IP-L-B Window Intercom Kit



Technical Data

Speaker	Rated Power Input	5W
	Impedance	4Ω
	Sensitivity	SPL 1W @ 1M 84dB
	Frequency Response	100Hz - 20,000Hz
Microphone	Directional Response	Omnidirectional
	Frequency Response	100Hz - 20,000Hz
	Sensitivity	-42dB ± 3dB @ 1KHz
	Impedance	2.2K

Physical Data

Dimensions	Width – 4.9" Depth – 2.6" Height - 7.2" Cable length - 8.3ft
Weight	2.8lbs
Construction	Stainless Steel, Polycarbonate
Finish	Black Power Coated

MIC-M14-000

Window Mounted Microphone

A customer side window mounted directional microphone. The directional microphone makes this ideal for environments with high ambient noise levels.

This microphone is included in the STS-K020 Window Intercom Kit and available with a bent or straight stem.



Technical Data

Directional Response	Cardioid
Frequency Response	70Hz - 10300Hz
Sensitivity	-47dB \pm 3dB @ 1KHz
Impedance	680 Ω \approx /- @ 1KHz

Physical Data

Dimensions	Depth - 1.08" Diameter - 1.19"
Weight	0.19lbs
Construction	Aluminium
Finish	Silver Anodised

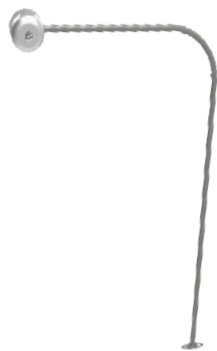
STS-M14-BENT

Window Mounted Microphone with Bent Stem

A customer side window mounted directional microphone with a bent stem.

This microphone is included in the STS-K072 Window Intercom Kit with a black powder coated stem and in the STS-K058 Window Intercom Kit with a grey powder coated stem.

The microphone mounts to the window with an adhesive pad and the stem is intalled to the counter with provided screws and screw covers.



Technical Data

Directional Response	Cardioid
Frequency Response	70Hz - 10,300Hz
Sensitivity	-47dB \pm 3dB @ 1KHz
Impedance	680 Ω \approx /- @ 1KHz

Physical Data

Dimensions	Depth - 1.08" Diameter - 1.19" Stem - 11.8"
Weight	0.41lbs
Construction	Aluminium
Finish	Grey or Black Power Coated

MIC-M14-300

Window Mounted Microphone with Stem

A customer side window mounted directional microphone with a 11.8inch stem. This microphone is included in the STS-K062 and STS-K064 Window Intercom Kits. It can be installed as a drop down from the STS-S23 Overhead Speaker or from the side or bottom of a window with the D bracket accessory.

If you need additional length, the STS-M14-300-EX can be added to the stem to give an additional 15.75 inches.



Technical Data

Directional Response	Cardioid
Frequency Response	70Hz - 10300Hz
Sensitivity	-47dB ± 3dB @ 1KHz
Impedance	680Ω =/- @ 1KHz

Physical Data

Dimensions	Depth - 1.08" Diameter - 1.19" Length - 13.0"
Weight	0.36lbs
Construction	Aluminum
Finish	Silver Anodised

STS-M14-300-EX

Window Mounted Microphone Extender

This extender is 15.75 inches and for use with the STS-M14-300 microphone to give additional stem length when installing onto larger windows.

It can be cut to length during installation.



Physical Data

Dimensions	Stem - 15.75"
Weight	1.10lbs
Construction	Aluminium
Finish	RAL 9006 Powdercoat Semi Gloss

MIC-M15

Boundary Microphone

The boundary microphone is suitable for use on the customer side. It is omni-directional, making it a fit for environments with low to moderate ambient noise.

Screws and double-sided adhesive pads are included for installation.

Will soon be featured in the STS-K070 and STS-K071 Window Intercom Systems.



Technical Data

Directional Response	Omni-Directional
Frequency Response	20Hz - 20kHz
Sensitivity	-42dB \pm 3 dB
Impedance	2.2K

Physical Data

Dimensions	Diameter - 1.41" Height - 0.47"
	Connection Cable Length - 6.56 ft
Construction	ABS Plastic
Finish	Black Fine Texture

MIC-M15-300-IP

IP54 Rated Stem Microphone

IP54 rated microphone fully designed to be installed outdoors, able to withstand harsh weather conditions and environments. The microphone offers protection against water, dust and dirt ingress.

This microphone is included in the STS-K080-IP Window Intercom Kit.



Technical Data

Directional Response	Omni-Directional
Frequency Response	100Hz - 20,000Hz
Sensitivity	-42 dB \pm 3 dB (0dB=1V/pa)
Impedance	2.2K

Physical Data

Dimensions	Diameter - 1.41" Depth - 0.47" Stem - 11.8"
	Construction
Finish	Black Powder Coat

MIC-M300

Gooseneck Microphone

A free-standing directional microphone for the staff side, with a flexible gooseneck and round base.

This microphone is included in the STS-K062 Window Intercom kit.



Technical Data

Directional Response	Cardioid
Frequency Response	150Hz - 10,500Hz
Sensitivity	49.5dB+ 2dB @ 1kHz (0dB=1V/pa)
Impedance	1.6KΩ+ 3-% @ 1kHz

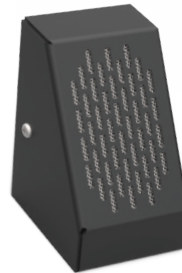
Physical Data

Dimensions	Base – 2.74” Height – 13.38”
Weight	2.05lbs
Construction	Mild Steel
Finish	Grey Semi Gloss

STS-M54

Surface Mounted Microphone

This customer side surface mounted microphone is featured in the STS-K002 Window Intercom Kit. It is an omnidirectional microphone making it suitable for environments with low to moderate ambient noise. It’s available in both Grey and Black finishes.



Technical Data

Directional Response	Omni-Directional
Frequency Response	100Hz - 5000Hz
Sensitivity	-42.5 ± 2.0dB @ 1kHz (0dB=1V/pa)
Impedance	2KΩ +/- @ 1kHz

Physical Data

Dimensions	Height – 4.26” Width – 2.37” Depth – 2.93”
Weight	S60 - 1.23lbs; M54 - 1.04lbs
Construction	Mild Steel
Finish	Grey Leatherette
	Black Textured

Product Codes

Surface Mic in Grey	STS-M54-G
Surface Mic in Black	STS-M54-B

STS-M56

Flush Microphone

This customer side flush mounted microphone is featured in the STS-K003 Window Intercom Kit. It is an omnidirectional microphone making it suitable for environments with low to moderate ambient noise.



Physical Data

Dimensions	Height – 1.97" Width – 2.56" Depth – 4.72"
Weight	1.04lbs
Construction	Mild Steel
Finish	Grey Leatherette
	Black Textured

Product Codes

Flush Mic in Grey	STS-M56-G
Flush Mic in Black	STS-M56-B

Technical Data

Directional Response	Omni-Directional
Frequency Response	100Hz - 5000Hz
Sensitivity	-42.5 ± 2.0dB @ 1KHz (0dB=1V/pa)
Impedance	2KΩ =/- @ 1KHz

STS-C100 / STS-C200

Anti Vandal Screen Mounted Microphone with Poly Plates

This customer side anti-vandal microphone with glass mount kit is ballistic IIIA rated. It comes with two polycarbonate plates, two grey gaskets, the STS-M14-000 microphone, hardware and a 3' piece of tubing. It is featured in the STS-K020 Window Intercom Kit. Two size options are available, the C100 accommodates a 4" hole in the glass and the C200 can accommodate a 5" hole in the glass.



Product Codes

Retrofit Kit to accommodate 4" hole	STS-C100
Retrofit Kit to accommodate 5" hole	STS-C200

Technical Data

Directional Response	Cardioid
Frequency Response	70Hz - 10300Hz
Sensitivity	-47dB ± 3dB @ 1KHz
Impedance	680Ω =/- @ 1KHz

STS-S22 Overhead Speaker

An overhead sealed speaker module designed to be fitted above either the staff or customer side counters. It is the same speaker module as the STS-S23 overhead speaker but comes with a mounting bracket with a larger depth.



Technical Data

RMS	5W
Impedance	4Ω
Output	SPL 1W @ 1M 85dB
Frequency Response	150Hz - 10300Hz

Physical Data

Speaker Dimensions	Height – 3.26” Width – 4.01” Depth –3.54”
Weight	1.12 lbs
Construction	Mild Steel
Finish	Powder Coated RAL9006 Semi Gloss

STS-S23 Overhead Speaker

An overhead sealed speaker module designed to be fitted above either the staff or customer side counters.

This speaker is featured in the STS-K020, STS-K062 and STS-K064 Window Intercom Kits.

Single and dual mounting brackets are available for installation.



Technical Data

RMS	5W
Impedance	4Ω
Output	SPL 1W @ 1M 85dB
Frequency Response	150Hz - 10300Hz

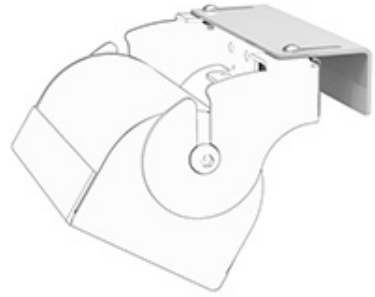
Physical Data

Speaker Dimensions	Height – 3.26” Width – 4.01” Depth –3.54”
Weight	1.12 lbs
Construction	Mild Steel
Finish	Powder Coated RAL9006 Semi Gloss

STS-S23-BRKT

Single Clamp Bracket for the STS-S23 Overhead Speaker

This clamp bracket can be adhered to a freestanding glass or safety partition and similar screens where the top of the glass is exposed. The clamp is adjustable between 2-20mm to accommodate a range of glass thicknesses. Hardware and adhesive pads are included to secure the bracket to required surfaces.



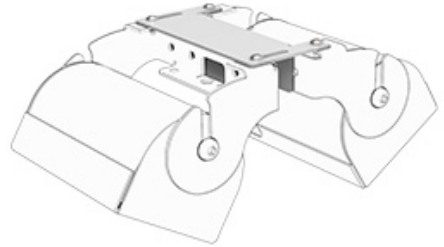
Physical Data

Dimensions	Height – 0.98" Width – 3.77" Depth – 1.02"
Construction	Mild Steel
Finish	RAL 9006 Powder Coated Semi Gloss

STS-S60

Dual Clamp Bracket for the STS-S23 Overhead Speaker

The Dual Clamping Bracket allows for two STS-S23 Overhead Speakers to be adhered to a freestanding glass or safety partition and similar screens where the top of the glass is exposed. The clamp is adjustable between 2-20mm to accommodate a range of glass thicknesses. Hardware and adhesive pads are included to secure the bracket to required surfaces.

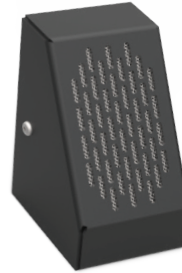


Physical Data

Dimensions	Height – 0.98" Width – 3.77" Depth – 1.92"
Construction	Mild Steel
Finish	RAL 9006 Powder Coated Semi Gloss

STS-S60 Surface Speaker

Customer side, free-standing speaker available in both Grey and Black finishes. This speaker is featured in the STS-K002 and STS-K058 Window Intercom Kits.



Technical Data

RMS	5W
Impedance	4Ω
Output	SPL 1W @ 1M 85dB
Frequency Response	150Hz - 10300Hz

Product Codes

Surface Speaker in Grey	STS-S60-G
Surface Speaker in Black	STS-S60-B

Physical Data

Dimensions	Height – 4.26" Width – 2.37" Depth – 2.93"
Weight	1.23lbs
Construction	Mild Steel
Finish	Grey Leatherette
	Black Textured

STS-S61 Flush Speaker

Customer side, flush mounted speaker available in both Grey and Black finishes. This speaker is featured in the STS-K003 Window Intercom Kit.



Technical Data

RMS	5W
Impedance	4Ω
Output	SPL 1W @ 1M 85dB
Frequency Response	150Hz - 10300Hz

Product Codes

Flush Speaker in Grey	STS-S61-G
Flush Speaker in Black	STS-S61-B

Physical Data

Dimensions	Height – 1.97" Width – 2.56" Depth – 4.72"
Weight	1.23lbs
Construction	Mild Steel
Finish	Grey Leatherette
	Black Textured

STS-S70

Speaker Pod

A speaker pod can be either free standing or surface mounted. It is included in the STS-K070 and STS-K071 Window Intercom kits.

Mounting the speaker pod to a counter or surface can be done with an adhesive pad or by screwing the base in place with provided mounting holes.



Technical Data

RMS	5W
Impedance	4Ω
Frequency Response	150Hz - 10300Hz
Output	SPL 1W @ 1M 85dB

Physical Data

Dimensions	Diameter – 4.30" Height – 1.50"
Finish	Black RAL 9005
Construction	ABS Plastic

STS-S80-IP

IP54 Rated Overhead Speaker

The STS-S80-IP is an overhead IP54 rated speaker fully designed to be installed outdoors, able to withstand harsh weather conditions and environments. The speaker offers protection against water, dust and dirt ingress.



Technical Data

RMS	30W
Impedance	8 Ω
Output	SPL 1W @ 1M 88dB
Frequency Response	120Hz - 20,000Hz

Physical Data

Dimensions	Height – 4.17" Width – 6.02" Depth – 4.17"
Weight	1.98lbs
Construction	Plastic and Metal
	Matt Black

IL-AE97**Supaloop Aerial**

The hearing loop aerial is built into the blue loop sign, and is featured in the STS-K062 Window Intercom kit. It comes with an adhesive pad for mounting.

Suitable for mounting on (COVID) safety screens, grocery check-out lanes, vertical surfaces on counters at banks or customer service stations.

**Physical Data**

Dimensions	Height - 8.07" Width - 8.07" Depth - 0.21" Connection Cable Length - 78.74"
Weight	0.44lbs
Construction	Various
Finish	Various

IL-AE98**Window Mounted Hearing Loop Aerial**

The Window Mounted Hearing Loop Aerial comes with a hearing loop sticker, IL-AE96 loop aerial and a back sticker. The front facing sticker with the ear logo has adhesive on the front, and is designed to be installed from the staff side. The IL-AE96 is to be installed between the front and rear sticker to the counter's window.

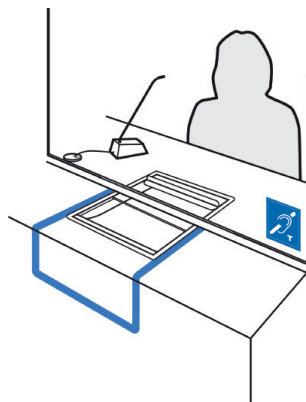
**Physical Data**

Dimensions	Height - 8.50" Width - 8.50" Depth - 0.10" Connection Cable Length - 6.5ft
Weight	0.26lbs
Construction	Various
Finish	Various

IL-AE99

Under the Counter Hearing Loop Aerial

The IL-AE99 Under the Counter Hearing Loop Aerial is flexible and can be moulded under the counter in the configuration as seen in the image. It can be installed with self adhesive clips, P-clips or hot glue. When connected to the STS-A31H Window Intercom Amplifier, it transmits a magnetic field which enables the telecoil in the user's hearing instrument to receive the signal.



Physical Data

Dimensions	Can be moulded to desired size/shape Wire length - 72" Wire diameter - 0.15"
Weight	0.22lbs
Construction	Copper Wire with Black Protective Covering
Finish	Black PVC



STS-EX

Extension Cables

The Window Intercom System Extension Cables enables the staff and customer speaker and/or microphone components to be installed up to 65.6 ft from the STS-A31H Window Intercom System Amplifier.

The extension cables are available in four different lengths.



Technical Data

Connector 1	x2 Female Euroblock .35cm
Connector 2	x2 Male Euroblock .35cm

Product Codes

5 Meter Cable (16.4ft)	STS-EX-5
10 Meter Cable (32.8ft)	STS-EX-10
15 Meter Cable (49.2ft)	STS-EX-15
20 Meter Cable (65.6ft)	STS-EX-20

STS-SJB

Break Out Box

The Break Out Box (BOB) is an accessory that can be used with any Window Intercom System that allows a staff to wear a headset. It can be used in addition to or as a replacement to the staff side speaker and microphone. The BOB is a good solution to environments with high ambient noise and where there are many windows next to each other.

The BOB is available in two models for headsets with 3.5mm connection and RJ11 connections.



STS-SJB-3.5



STS-SJB-RJ

Features

- Push button mute switch
- Headset connection
- Compact
- Easy to install

Technical Data

Connections	Break Out Box (RJ11 Connection)	
	Headset Loudspeaker(s) and Microphone – B.O.B. Headphones and Microphone	RJ11 Connection
	Break Out Box (3.5mm Connection)	
	Headset Microphone – B.O.B. Microphone	3.5mm TRS Connection
	Headset Loudspeaker(s) – B.O.B. Headphones	3.5mm TRS Connection
	Break Out Box (3.5mm Jack & RJ11 Connection)	
	B.O.B. Microphone (Grey Sleeve) – STS-A31	2 pin Euro-block Connector
	B.O.B. loudspeaker (Black Sleeve) – STS-A31	2 pin Euro-block Connector
	Staff Unit – B.O.B. MIC	2 pin Euro-block Connector
	Staff Unit – B.O.B. SPKR	2 pin Euro-block Connector

Physical Data

Dimensions	Height – 0.80"
	Width – 3.80" Depth – 1.58"
Weight	0.23lbs
Construction	ABS Plastic
Finish	Black

Product Codes

Break Out Box (3.5mm)	STS-SJB
Break Out Box (RJ11 Connection)	STS-SJB-RJ

HEADSET-1-RJ11 / HEADSET-1-3.5mm

1 Ear Headset and Microphone

This one ear monoaural headset has a built-in noise cancelling boom microphone. It is compatible with our Break Out Box [STS-SJB].

Technical Data (Microphone)

Pattern	Electret
Impedance	Max. 3.9K Ω
Sensitivity	-43 \pm 3dB @ 1kHz
Frequency Range	100-10kHz

Technical Data (Speaker)

Pattern	Dynamic moving coil
Impedance	150 Ω / 300 Ω
Sound Pressure	94 \pm 3dB / 91 \pm 3dB at 1kHz
Sound Intensity	80mW / 40mW
Frequency Range	300-3.4 kHz



Physical Data

Weight	0.10lbs
--------	---------

HEADSET-2-RJ11 / HEADSET-2-3.5mm

2 Ear Headset and Microphone

This two ear binaural headset has a built-in noise cancelling boom microphone. It is compatible with our Break Out Box [STS-SJB].

Technical Data (Microphone)

Pattern	Electret
Impedance	Max. 3.9K Ω
Sensitivity	-43 \pm 3dB @ 1kHz
Frequency Range	100-10kHz

Technical Data (Speaker)

Pattern	Dynamic moving coil
Impedance	150 Ω / 300 Ω
Sound Pressure	94 \pm 3dB / 91 \pm 3dB at 1kHz
Sound Intensity	80mW / 40mW
Frequency Range	300-3.4 kHz



Physical Data

Weight	0.14 lbs
--------	----------

PS-55

Power Supply

The PS-55 Power Supply is a Level 6 power supply for use with the STS-A31H Window Intercom Amplifier.

Complies with UL, RCM, KC, FCC, CE (EMC), and CCC standards.

Physical Data

Dimensions	Height - 3.66" Width - 1.93" Depth - 1.42" Cable Length - 70.87"
Weight	0.39lbs
Construction	ABS Plastic

Technical Data

Input	100-240V - 50-60Hz
Output	14V 2.14A 30W max





Contact us:

- ☎ 1 (616) 392-3400
- ✉ sales@contactainc.com
- 📠 1 (855) 250-5667

Contacta, Inc
4025 Tampa Road Suite 1107A
Oldsmar, FL 34677
United States

www.contactainc.com