

# Speech Transfer Systems

Enhance your customer service by aiding and improving your communication with customers





# Contents

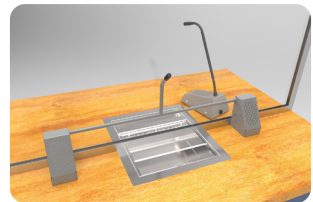
Section	Page
<b>Introduction</b> .....	3
<b>Complete STS Kits</b>	
STS-K001 Bridge Bar Kit.....	4
STS-K002 Surface Mounted Kit.....	5
STS-K003 Flush Mounted Kit.....	6
STS-K015 Dual Overhead Speaker Kit.....	7
STS-K020 Retrofit Glass Mounted Kit.....	8
STS-K035 Curved Microphone Kit.....	9
STS-K058 Bent Microphone Kit.....	10
STS-K060 Stainless Bridge Bar Kit.....	11
<b>Components</b>	
STS-A31H Speech Transfer Amplifier.....	12
STS-SU1 Staff Unit.....	13
STAFFMIC-01-NWB Staff Gooseneck Microphone.....	13
STS-S60/STS-M54 Surface Mounted Speaker & Microphone.....	14
STS-S22 Bracket Mounted Overhead Speaker.....	14
STS-S61/STS-M56 Flush Mounted Speaker & Microphone.....	15
STS-S30 Surface Mounted Overhead Speaker.....	15
STS-B80 Bridge Bar Customer Unit.....	16
STS-B90 Slimline Bridge Bar Unit.....	16
STS-B94 Half Bridge Bar Unit.....	17
STS-B100 Recessed Bridge Bar Unit.....	17
STS-C100 Anti-Vandal Microphone.....	18
STS-M14-BENT Bent Anti-Vandal Microphone.....	18
IL-AE99 Under the Counter Hearing Loop Aerial.....	19
IL-AE96 Above the Counter Hearing Loop Aerial.....	19
<b>Accessories</b>	
STS-SJB Break Out Box.....	20
HEADSET-1EAR-RJ SC 230 Headset & Microphone (Sennheiser).....	21
HEADSET-2EAR-RJ SC 260 Headset & Microphone (Sennheiser).....	21
HEADSET-1EAR PC 2 Headset & Microphone (Sennheiser).....	22
HEADSET-2EAR PC 3 Headset & Microphone (Sennheiser).....	22
PS-55 Power Supply.....	23



## Speech Transfer Systems provide clear sound for communication between a glass barrier

Conversations through teller windows at ticket offices, theaters, public transit and other customer-facing venues are not effective without a window intercom system.

With the help of Contacta's Speech Transfer Systems (STS), the customer and staff each have a microphone and speaker to ensure crystal-clear communication. Those with a hearing loss will have an equally enjoyable experience with a hearing loop aerial available for every kit.



## STS-K001 Bridge Bar Kit

The STS-K001 Speech Transfer System features the popular STS-B80 Bridge Bar Customer Unit with a microphone in the center and speakers on either side. The all-in-one design make it effortless to install. For the staff, the STS-SU1 combined microphone and speaker unit has an adjustable neck and features a mute switch. The kit comes with an IL-AE99 under the counter hearing loop aerial.

### Physical Data

Dimensions (boxed)	Height – 4.63" Width – 25.50" Depth – 13.06"
Weight (boxed)	8.0lbs
Construction	Mild Steel
	ABS Plastic
Finish	Grey Leatherette
	Black Textured

### Product Codes

Bridge Bar Kit in Grey	STS-K001-G
Bridge Bar Kit in Black	STS-K001-B

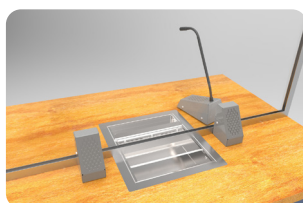
### Includes

- STS-A31H Speech Transfer Amplifier (page 12)
- STS-B80 Bridge Bar Customer Unit (page 16)
- STS-SU1 Staff Unit (page 13)
- PS-55 Power Supply (page 23)
- IL-AE99 Under the Counter Hearing Loop Aerial (page 19)

### Applications

For use where one to one communication is impaired by glass, such as:

- Banks
- Post Offices
- Theaters
- Information Centers
- Public Transit Systems
- Ticket Counters
- Embassies
- Government Buildings



## STS-K002 Surface Mounted Kit

The STS-K002 Speech Transfer System features individual speaker and microphone units for the customer-side. The individual speaker and microphone units provide flexibility on where they can be installed on the counter. For the staff, the STS-SU1 combined microphone and speaker unit has an adjustable neck and features a mute switch. The kit comes with an IL-AE99 under the counter hearing loop aerial.

### Physical Data

Dimensions (boxed)	Height – 5.12" Width – 13.39" Depth – 9.45"
Weight (boxed)	5.42lbs
Construction	Mild Steel
	ABS Plastic
Finish	Grey Leatherette
	Black Textured

### Product Codes

Surface Mounted Kit in Grey	STS-K002-G
Surface Mounted Kit in Black	STS-K002-B

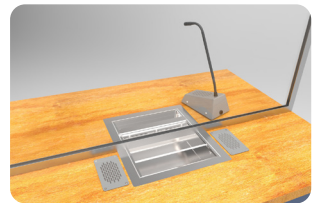
### Includes

- STS-A31H Speech Transfer Amplifier (page 12)
- STS-S60 Surface Mounted Speaker (page 14)
- STS-M54 Surface Mounted Microphone (page 14)
- STS-SU1 Staff Unit (page 13)
- PS-55 Power Supply (page 23)
- IL-AE99 Under the Counter Hearing Loop Aerial (page 19)

### Applications

For use where one to one communication is impaired by glass, such as:

- Banks
- Post Offices
- Theaters
- Information Centers
- Public Transit Systems
- Ticket Counters
- Embassies
- Government Buildings



## STS-K003 Flush Mounted Kit

The STS-K003 Speech Transfer System features individual speaker and microphone units that can be flush mounted to the counter surface or nearby vertical surface for a sleek and unobtrusive installation on the customer side. The flush units are designed to prevent tampering in high-risk environments such as banks and prisons. For the staff, the STS-SU1 combined microphone and speaker unit has an adjustable neck and features a mute switch. The kit comes with an IL-AE99 under the counter hearing loop aerial.

### Physical Data

Dimensions (boxed)	Height – 5.12"
	Width – 13.39" Depth – 9.45"
Weight (boxed)	5.29lbs
Construction	Mild Steel
	ABS Plastic
Finish	Grey Leatherette
	Black Textured

### Product Codes

Flush Mounted Kit in Grey	STS-K003-G
Flush Mounted Kit in Black	STS-K003-B

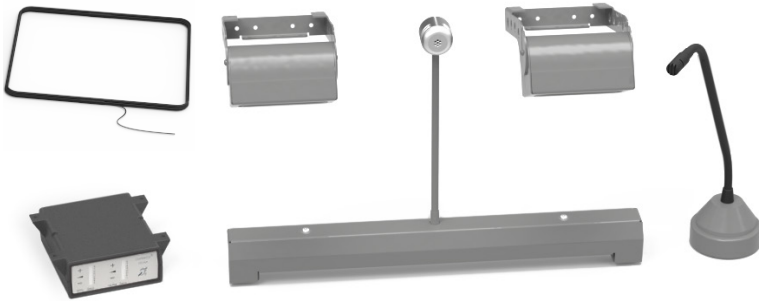
### Includes

- STS-A31H Speech Transfer Amplifier (page 12)
- STS-S61 Flush Mounted Speaker (page 15)
- STS-M56 Flush Mounted Microphone (page 15)
- STS-SU1 Staff Unit (page 13)
- PS-55 Power Supply (page 23)
- IL-AE99 Under the Counter Hearing Loop Aerial (page 19)

### Applications

For use where one to one communication is impaired by glass, such as:

- Banks
- Post Offices
- Theaters
- Information Centers
- Public Transit Systems
- Ticket Counters
- Embassies
- Government Buildings



## STS-K015 Dual Overhead Speaker Kit

The STS-K015 Speech Transfer System features the STS-B100 Recessed Bridge Bar with a glass mounted microphone for the customer side. The kit includes the STAFFMIC-01-NWB gooseneck microphone with a round base for the staff and overhead speaker modules are provided for both the customer and staff side. The kit comes with an IL-AE99 under the counter hearing loop aerial.

### Physical Data

Dimensions (boxed)	Height – 5.12" Width – 14.96" Depth – 12.60"
Weight (boxed)	8.99lbs
Construction	Mild Steel
	ABS Plastic
Finish	Grey Leatherette
	Grey Semi Gloss

### Includes

- STS-A31H Speech Transfer Amplifier (page 12)
- STS-B100 Recessed Bridge Bar Unit (page 17)
- STAFFMIC-01-NWB Staff Gooseneck Microphone (page 13)
- (2) STS-S22 Bracket Mounted Overhead Speakers (page 14)
- PS-55 Power Supply (page 23)
- IL-AE99 Under the Counter Hearing Loop Aerial (page 19)

### Product Codes

Overhead Speaker System	STS-K015
-------------------------	----------

### Applications

For use where one to one communication is impaired by glass, such as:

- Banks
- Post Offices
- Theaters
- Information Centers
- Public Transit Systems
- Ticket Counters
- Embassies
- Government Buildings



**STS-K020**

**Retrofit Glass Mounted Kit**

The STS-K020 Speech Transfer System is specifically designed to retrofit into a glass window where an existing system has left a hole in the glass. The glass mounted customer microphone is attached with two polycarbonate plates that are Level 3 Ballistic rated. The standard kit comes with the STS-S30 flush mounted customer speaker, STS-SU1 combined microphone and speaker unit for the staff and a glass mounted hearing loop aerial and sign.

**Physical Data**

Dimensions (boxed)	Height – 5.12"
	Width – 13.39" Depth – 9.45"
Weight (boxed)	5.29lbs
Construction	Mild Steel
	ABS Plastic
Finish	Grey Leatherette
	Grey Semi Gloss
	Black Textured

**Product Codes**

Retrofit Glass Mounted Kit with Surface Speaker	STS-K020-S30
Retrofit Glass Mounted Kit with Bracket Speaker	STS-K020-S22

**Includes**

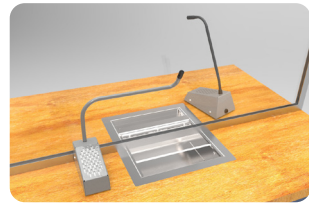
- STS-A31H Speech Transfer Amplifier (page 12)
- STS-S30 Surface Mounted Overhead Speaker (page 15)
- STS-C100 Glass Mounted Microphone Kit (page 18)
- STS-SU1 Staff Unit (page 13)
- PS-55 Power Supply (page 23)
- IL-AE96 Window Mounted Hearing Loop Aerial (page 19)

**Applications**

For use where one to one communication is impaired by glass, such as:

- Banks
- Post Offices
- Theaters
- Information Centers
- Public Transit Systems
- Ticket Counters
- Embassies
- Government Buildings





## STS-K035 Curved Microphone Kit

The STS-K035 Speech Transfer System features a Half Bridge Bar customer speaker and microphone unit that can be positioned to the left or right of a pass through tray. For the staff, the STS-SU1 combined microphone and speaker unit has an adjustable neck and features a mute switch. The kit comes with an IL-AE99 under the counter hearing loop aerial.

### Physical Data

Dimensions (boxed)	Height – 6.30" Width – 12.20" Depth – 11.81"
Weight (boxed)	5.78lbs
Construction	Mild Steel
	ABS Plastic
Finish	Grey Leatherette
	Black Textured

### Includes

- STS-A31H Speech Transfer Amplifier (page 12)
- STS-B94 (LH/RH) Half Bridge Bar Unit (page 17)
- STS-SU1 Staff Unit (page 13)
- PS-55 Power Supply (page 23)
- IL-AE99 Under the Counter Hearing Loop Aerial (page 19)

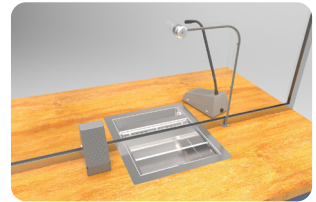
### Applications

For use where one to one communication is impaired by glass, such as:

- Banks
- Post Offices
- Theaters
- Information Centers
- Public Transit Systems
- Ticket Counters
- Embassies
- Government Buildings

### Product Codes

Curved Left Microphone Kit in Black	STS-K035-LH-B
Curved Left Microphone Kit in Grey	STS-K035-LH-G
Curved Right Microphone Kit in Black	STS-K035-RH-B
Curved Right Microphone Kit in Grey	STS-K035-RH-G



## STS-K058

# Bent Microphone Kit

The STS-K058 Speech Transfer System kit includes the customer STS-S60 Surface Mounted Speaker unit and the STS-M14 Glass Mounted Microphone with attached curved tubing. For the staff, the STS-SU1 combined microphone and speaker unit has an adjustable neck and features a mute switch. The kit comes with an IL-AE99 under the counter hearing loop aerial.

### Physical Data

Dimensions (boxed)	Height – 6.30" Width – 11.81" Depth – 12.20"
Weight (boxed)	5.51lbs
Construction	Mild Steel
	ABS Plastic
Finish	Grey Leatherette
	Black Textured

### Product Codes

Bent Microphone Kit in Grey	STS-K058-G
Bent Microphone Kit in Black	STS-K058-B

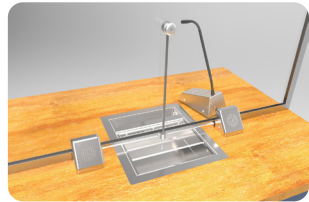
### Includes

- STS-A31H Speech Transfer Amplifier (page 12)
- STS-S60 Surface Mounted Speaker (page 14)
- STS-M14 BENT Customer Glass Mounted Microphone with Curved Tubing (page 18)
- STS-SU1 Staff Unit (page 13)
- PS-55 Power Supply (page 23)
- IL-AE99 Under the Counter Hearing Loop Aerial (page 19)

### Applications

For use where one to one communication is impaired by glass, such as:

- Banks
- Post Offices
- Theaters
- Information Centers
- Public Transit Systems
- Ticket Counters
- Embassies
- Government Buildings



## STS-K060 Stainless Bridge Bar Kit

The STS-K060 Speech Transfer System features the STS-S90-SS Stainless Bridge Bar Unit with a glass-mounted microphone in a stainless steel finish. The STS-SU1 combined microphone and speaker unit for the staff is provided in a stainless steel finish to give the kit a sleek modern look. The kit comes with an IL-AE99 under the counter hearing loop aerial.

### Physical Data

Dimensions (boxed)	Height – 4.63” Width – 25.50” Depth – 18.06”
Weight (boxed)	9.37lbs
Construction	Mild Steel
	ABS Plastic
Finish	Stainless Steel

### Includes

- STS-A31H Speech Transfer Amplifier (page 12)
- STS-B90-SS Slimline Bridge Bar Unit (page 16)
- STS-SU1-SS Staff Unit (page 13)
- PS-55 Power Supply (page 23)
- IL-AE99 Under the Counter Hearing Loop Aerial (page 19)

### Product Codes

Stainless Bridge Bar Kit	STS-K060
--------------------------	----------

### Applications

For use where one to one communication is impaired by glass, such as:

- Banks
- Post Offices
- Theaters
- Information Centers
- Public Transit Systems
- Ticket Counters
- Embassies
- Government Buildings



## STS-A31H Speech Transfer Amplifier

The STS-A31H is an all-in-one Hearing Loop and Duplex Amplifier specifically designed for all the Speech Transfer System kits.

### Features

- Energy-saving “green” standby mode is automatically used, achieving a power saving of up to 80%
- Constant current hearing loop drive (with engineer adjustable hearing loop drive level)
- Isolated audio line input / output allows additional ohmically isolated line level audio input or output to recording system
- Continuous self-testing means that no specialized equipment is required to confirm functionality
- Power and status indication: Green/Red LED column indicator aids adjustments and indicates power and status
- DC Power: 2.1mm DC jack

### Physical Data

Dimensions	Height – 1.58” Width – 4.58” Depth – 4.50”
Weight	0.32lbs
Construction	ABS Plastic Construction Housing
Finish	Matt Black Fine Texture

### Technical Data

Supply Voltage	12-14 VDC
Quiescent Current	100mA typical
Operating Current	2A typical on speech peaks
Power Switch	Push on - push off (tact switch under membrane)
Microphones	Electret, supply 5V via 2.2K $\Omega$ load resistor
Speaker Output Power	RMS: 2.5W / 8 $\Omega$ , 4.4W / 4 $\Omega$
Loop Drive Compliance	Constant current, bounded by 4Vrms & 3Arms
Total Harmonic Distortion	<5% (loop and speakers)

STS-SU1

# Staff Unit

The combined speaker and directional microphone module for the staff side has an integral loudspeaker, microphone with a semi-rigid stem, adjustable neck and mute switch.

### Physical Data

Dimensions	Height – 14.50" Width – 3.80" Depth – 6.05"
Weight	1.79lbs
Construction	Mild Steel
Finish	Grey Leatherette
	Black Textured
	Stainless Steel



### Technical Data

Speaker	RMS	5W
	Impedance	4Ω
	Output	SPL 1W @ 1M 85dB
	Frequency Response	150Hz - 10300Hz
Microphone	Directional Response	Cardioid
	Frequency Response	150Hz - 10500Hz
	Sensitivity	49.5dB+ 2dB @ 1kHz (0dB=1V/pa)
	Impedance	1.6KΩ+ 3-% @ 1kHz

### Product Codes

Staff Unit in Grey	STS-SU1-G
Staff Unit in Black	STS-SU1-B
Staff Unit in Stainless Steel	STS-SU1-SS

STAFFMIC-01-NWB

# Staff Gooseneck Microphone

A free-standing directional microphone for the staff side, with a flexible gooseneck and round base.



### Physical Data

Dimensions	Base – 2.74" Height – 13.38"
Weight	2.05lbs
Construction	Mild Steel
Finish	Grey Semi Gloss

### Technical Data

Directional Response	Cardioid
Frequency Response	150Hz - 10,500Hz
Sensitivity	49.5dB+ 2dB @ 1kHz (0dB=1V/pa)
Impedance	1.6KΩ+ 3-% @ 1kHz

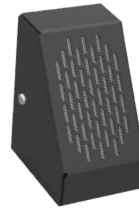
## STS-S60 / STS-M54

# Surface Mounted Speaker and Microphone

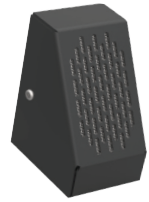
Customer side, free-standing speaker and omni-directional microphone modules.

### Physical Data

Dimensions	Height – 4.26" Width – 2.37" Depth – 2.93"
Weight	S60 - 1.23lbs; M54 - 1.04lbs
Construction	Mild Steel
Finish	Grey Leatherette
	Black Textured



S60 Speaker



M54 Microphone

### Technical Data

Speaker	RMS	5W
	Impedance	4Ω
	Output	SPL 1W @ 1M 85dB
	Frequency Response	150Hz - 10300Hz
Microphone	Directional Response	Omni-Directional
	Frequency Response	100Hz - 5000Hz
	Sensitivity	-42.5 ± 2.0dB @ 1KHz (0dB=1V/pa)
	Impedance	2KΩ +/- @ 1KHz

### Product Codes

Surface Speaker in Grey	STS-S60-G
Surface Speaker in Black	STS-S60-B
Surface Mic in Grey	STS-M54-G
Surface Mic in Black	STS-M54-B

## STS-S22

# Bracket Mounted Overhead Speaker

The overhead speaker module is designed to be mounted above the glass window with a bracket and can be used for customer side counters.



### Physical Data

Dimensions	Height – 2.99" Width – 3.26" Depth – 4.33"
Weight	1.15lbs
Construction	Mild Steel
Finish	Grey Semi Gloss

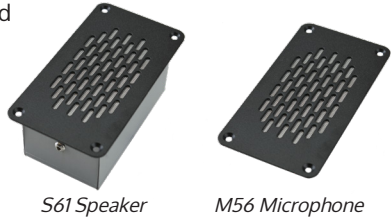
### Technical Data

RMS	5W
Impedance	4Ω
Output	SPL 1W @ 1m 85dB
Frequency Response	150Hz - 10300Hz

STS-S61 / STS-M56

# Flush Speaker and Microphone

Customer side, flush mounted speaker and omni-directional microphone modules.



S61 Speaker

M56 Microphone

### Physical Data

Dimensions	Height – 1.97" Width – 2.56" Depth – 4.72"
Weight	S61 - 1.23lbs; M56 - 1.04lbs
Construction	Mild Steel
Finish	Grey Leatherette
	Black Textured

### Technical Data

Speaker	RMS	5W
	Impedance	4Ω
	Output	SPL 1W @ 1M 85dB
	Frequency Response	150Hz - 10300Hz
Microphone	Directional Response	Omni-Directional
	Frequency Response	100Hz - 5000Hz
	Sensitivity	-42.5 ± 2.0dB @ 1KHz (0dB=1V/pa)
	Impedance	2KΩ +/- @ 1KHz

### Product Codes

Flush Speaker in Grey	STS-S61-G
Flush Speaker in Black	STS-S61-B
Flush Mic in Grey	STS-M56-G
Flush Mic in Black	STS-M56-B

STS-S30

# Surface Mounted Overhead Speaker

The overhead speaker module is designed to be surface mounted above the glass window with a bracket and can be used for customer side counters.



### Physical Data

Dimensions	Height – 2.99" Width – 3.26" Depth – 4.33"
Weight	1.15lbs
Construction	Mild Steel
Finish	Grey Semi Gloss

### Technical Data

RMS	5W
Impedance	4Ω
Output	SPL 1W @ 1m 85dB
Frequency Response	150Hz - 10300Hz

## STS-B80 Bridge Bar Customer Unit

A combined speaker and directional microphone module, designed for the customer side.

### Physical Data

Dimensions	Height – 8.63" Width – 24.25" Depth – 2.93"
Weight	3.0lbs
Construction	Mild Steel
Finish	Grey Leatherette
	Black Textured



### Technical Data

Speaker	RMS	5W
	Impedance	4Ω
	Output	SPL 1W @ 1M 85dB
	Frequency Response	150Hz - 11000Hz
Microphone	Directional Response	Cardioid
	Frequency Response	70Hz - 14000Hz
	Sensitivity	-67dB ± 3dB @ 1KHz
	Impedance	1.6KΩ +/- 30% @ 1KHz

### Product Codes

Bridge Bar Customer Unit in Grey	STS-B80-G
Bridge Bar Customer Unit in Black	STS-B80-B

## STS-B90 Slimline Bridge Bar Unit

A customer side stainless steel bridge bar unit with a combined speaker and screen mounted directional microphone.



### Physical Data

Dimensions	Height – 2.99" Width – 3.26" Depth – 4.33"
Weight	1.15lbs
Construction	Mild Steel
Finish	Grey Semi Gloss

### Technical Data

Speaker	RMS	5W
	Impedance	4Ω
	Output	SPL 1W @ 1M 85dB
	Frequency Response	150Hz - 11000Hz
Microphone	Directional Response	Cardioid
	Frequency Response	70Hz - 14000Hz
	Sensitivity	-47dB ± 3dB @ 1KHz
	Impedance	680Ω +/- 1KHz



## STS-B94 Half Bridge Bar Unit

A half bridge bar speaker and directional microphone module with a curved stem for counters with reduced space.



### Physical Data

Dimensions	Height – 9.44" Width – 11.02" Depth – 5.11"
Weight	1.67lbs
Construction	Mild Steel
Finish	Grey Leatherette
	Black Textured

### Technical Data

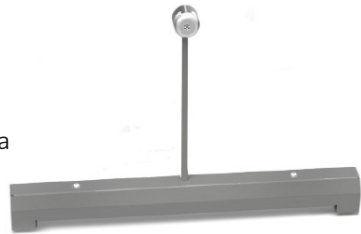
Speaker	RMS	5W
	Impedance	4Ω
	Output	SPL 1W @ 1M 85dB
	Frequency Response	150Hz - 11000Hz
Microphone	Directional Response	Cardioid
	Frequency Response	70Hz - 14000Hz
	Sensitivity	-67dB ± 3dB @ 1KHz
	Impedance	1.6KΩ +/- 30% @ 1KHz

### Product Codes

Curved Left Unit in Grey	STS-B94-LH-G
Curved Left Unit in Black	STS-B94-LH-B
Curved Right Unit in Grey	STS-B94-RH-G
Curved Right Unit in Black	STS-B94-RH-B

## STS-B100 Recessed Bridge Bar Unit

A customer side recessed bridge bar unit with a screen mounted directional microphone.



### Physical Data

Dimensions	Bridge Bar Height – 1.72" Width – 15.75" Depth – 1.37" Total Height - 12.99"
Weight	1.10lbs
Construction	Mild Steel
Finish	Grey Semi Gloss

### Technical Data

Directional Response	Cardioid
Frequency Response	70Hz - 14000Hz
Sensitivity	-47dB ± 3dB @ 1KHz
Impedance	680Ω +/- @ 1KHz

## STS-C100

# Anti-Vandal Microphone

A customer side microphone with front and back polycarbonate plates (threat level IIIA), silicon gaskets, and tubing



### Physical Data

Dimensions	Mounting Plates: Depth - 0.75" Diameter - 5.00"
Weight	1.10lbs
Construction	Polycarbonate (Threat Level IIIA) and Aluminum
Finish	Silver Anodised

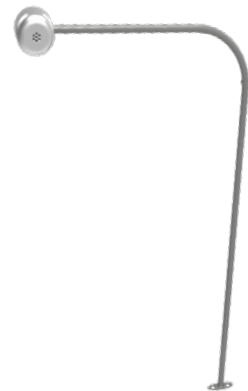
### Technical Data

Directional Response	Cardioid
Frequency Response	70Hz - 10300Hz
Sensitivity	-47dB ± 3dB @ 1KHz
Impedance	680Ω +/- @ 1KHz

## STS-M14-BENT

# Bent Anti-Vandal Microphone

A customer side bent anti-vandal microphone with a screen mounted directional microphone.



### Physical Data

Dimensions	Diameter - 1.2" Depth - 1.08" Stem - 11.8"
Weight	1.10lbs
Construction	Aluminium
Finish	Silver Anodised

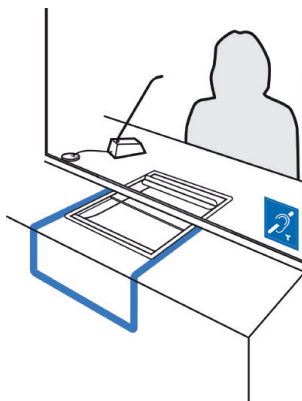
### Technical Data

Directional Response	Cardioid
Frequency Response	70Hz - 10,300Hz
Sensitivity	-47dB ± 3dB @ 1KHz
Impedance	680Ω +/- @ 1KHz

## IL-AE99

## Under the Counter Hearing Loop Aerial

The IL-AE99 Under the Counter Hearing Loop Aerial is kitted with Speech Transfer Systems: K001, K002, K003, K015, K035, K058 and K060. The Aerial is flexible and can be moulded under the counter in the configuration as seen in the image. It can be installed with self adhesive clips, P-clips or hot glue. When connected to the STS-A31H Speech Transfer Amplifier, it transmits a magnetic field which enables the telecoil in the user's hearing instrument to receive the signal.



### Physical Data

Dimensions	Can be moulded to desired size/shape Wire length - 72" Wire diameter - 0.15"
Weight	0.22lbs
Construction	Copper Wire with Black Protective Covering
Finish	Black PVC



## IL-AE96

## Above the Counter Hearing Loop Aerial

The IL-AE96 Above the Counter Hearing Loop Aerial is kitted with the Speech Transfer System: K020. The Aerial is fixed to the glass window in between a hearing loop sign and backing sticker.

When connected to the STS-A31H Speech Transfer Amplifier, it transmits a magnetic field which enables the telecoil in the user's hearing instrument to receive the signal.



### Physical Data

Dimensions	Height - 8.30" Width - 8.30" Wire length - 78.74"
Weight	0.22lbs
Construction	Flexible PVC
Finish	White

## STS-SJB Break Out Box

The Break Out Box (BOB) can be used in addition to or as a replacement to the STS-SU1 Staff Unit for headset capability. The BOB is a good fit for service-points where ambient noise conditions are high.

The BOB is available in two models for headsets with 3.5mm connection and RJ11 connections.

### Features

- Push button mute switch
- Headset connection
- Compact
- Easy to install
- Version with RJ11 connection available



STS-SJB



STS-SJB-RJ

### Physical Data

Dimensions	Height – 0.80" Width – 3.80" Depth – 1.58"
Weight	0.23lbs
Construction	ABS Plastic
Finish	Black

### Product Codes

Break Out Box (3.5mm)	STS-SJB
Break Out Box (RJ11 Connection)	STS-SJB-RJ

### Technical Data

		Break Out Box (RJ11 Connection)	
		Headset Loudspeaker(s) and Microphone – B.O.B. Headphones and Microphone	RJ11 Connection
		Break Out Box (3.5mm Connection)	
		Headset Microphone – B.O.B. Microphone	3.5mm TRS Connection
		Headset Loudspeaker(s) – B.O.B. Headphones	3.5mm TRS Connection
Connections	Break Out Box (3.5mm Jack & RJ11 Connection)		
	B.O.B. Microphone (Grey Sleeve) – STS-A31	2 pin Euro-block Connector	
	B.O.B. loudspeaker (Black Sleeve) –	2 pin Euro-block Connector	
	Staff Unit – B.O.B. MIC	2 pin Euro-block Connector	
	Staff Unit – B.O.B. SPKR	2 pin Euro-block Connector	

## HEADSET-1EAR-RJ SC 230 Headset & Microphone (Sennheiser)

The SC 230 is a single-ear headset. It has a built-in noise cancelling boom microphone.



### Features

- Durable Easy Disconnect plug (RJ11 connection)
- Single ear speaker allows staff to converse clearly
- Built-in noise cancelling boom microphone
- Compatible with STS-SJB-RJ

### Physical Data

Dimensions	Height – 6.02” Width – 7.87” Depth – 2.32” Connection cable length - 39.37”
Weight	0.12lbs
Construction	ABS Plastic
Finish	Black

### Technical Data

Impedance	~200Ω
Frequency Response	Headphones: 150 - 6,800Hz
	Microphone: 50 - 18,000Hz
Microphone Type	Noise-Cancelling
Sound Pressure Level	103dB limited by ActiveGard ®

## HEADSET-2EAR-RJ SC 260 Headset & Microphone (Sennheiser)

The SC 260 is a double-sided headset. It has a built-in noise cancelling boom microphone.



### Features

- Durable Easy Disconnect plug (RJ11 connection)
- Flexible microphone
- Adjustable headband
- Compatible with STS-SJB-RJ

### Physical Data

Dimensions	Height – 6.02” Width – 7.87” Depth – 2.32” Connection cable length - 39.37”
Weight	0.18lbs
Construction	ABS Plastic
Finish	Black

### Technical Data

Impedance	~200Ω
Frequency Response	Headphone: 150 - 6,800Hz
	Microphone: 50 - 18,000Hz
Microphone Type	Noise-Cancelling
Sound Pressure Level	103dB limited by ActiveGard ®

## HEADSET-1EAR

# PC 2 Headset & Microphone (Sennheiser)

The PC 2 is a single-ear stereo headset with built-in noise-cancelling microphone.

### Features

- Single ear speaker allows staff to converse clearly
- 3.5mm color coded jacks
- Flexible microphone
- Adjustable headband
- Compatible with STS-SJB



### Physical Data

Dimensions	Height – 9.60" Width – 8.34" Depth – 2.53" Connection cable length - 78.74"
Weight	0.12lbs
Construction	ABS Plastic
Finish	Black

### Technical Data

Sound Pressure Level	Headphones: 95dB
Sensitivity	Microphone: -40dBV
Frequency Response	Headphones: 42 - 17,000Hz
	Microphone: 90 - 15000Hz
Impedance	Headphones: 32Ω
	Microphone: 2k
Pick-Up Pattern	Uni-Directional

## HEADSET-2EAR

# PC 3 Headset & Microphone (Sennheiser)

The PC 3 is a stereo headset with built-in noise-cancelling boom microphone.

### Features

- 3.5mm color coded jacks
- Flexible microphone
- Adjustable headband
- Compatible with STS-SJB



### Physical Data

Dimensions	Height – 9.60" Width – 8.34" Depth – 2.53" Connection cable length - 78.74"
Weight	0.16lbs
Construction	ABS Plastic
Finish	Black

### Technical Data

Sound Pressure Level	Headphones: 95dB
Sensitivity	Microphone: -40dBV
Frequency Response	Headphones: 42 - 17,000Hz
	Microphone: 90 - 15000Hz
Impedance	Headphones: 32Ω
	Microphone: 2k
Pick-Up Pattern	Uni-Directional

PS-55

Power Supply

The PS-55 Power Supply is a Level 6 power supply for use with the STS-A31H Speech Transfer Amplifier. Complies with UL, RCM, KC, FCC, CE (EMC), and CCC standards.



Physical Data

Dimensions	Height - 3.66" Width - 1.93" Depth - 1.42" Cable Length - 70.87"
Weight	0.39lbs
Construction	ABS Plastic

Technical Data

Input	100-240V - 50-60Hz
Output	14V 2.14A 30W max



## Contact us:

- ☎ 1 (616) 392-3400
- ✉ sales@contactainc.com
- 📠 1 (855) 250-5667

Contacta, Inc  
332 E. Lakewood Blvd. Suite 400  
Holland, MI 49424  
United States

[www.contactainc.com](http://www.contactainc.com)